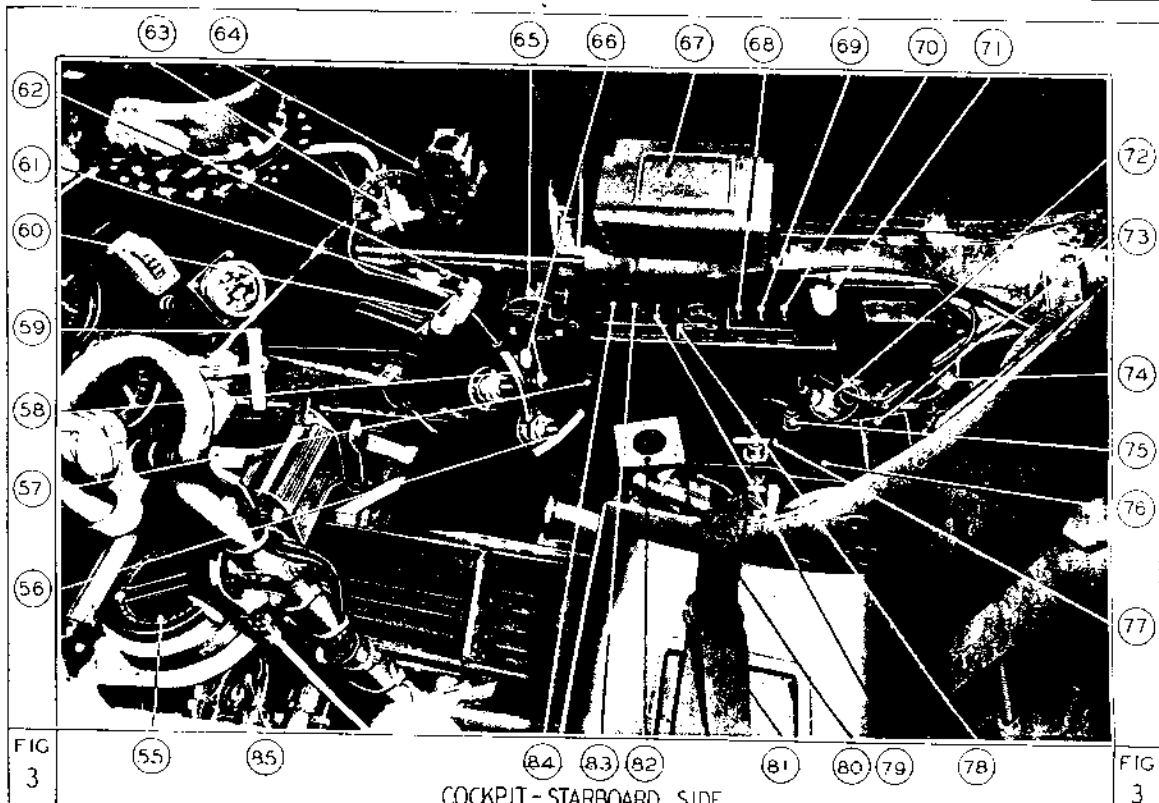
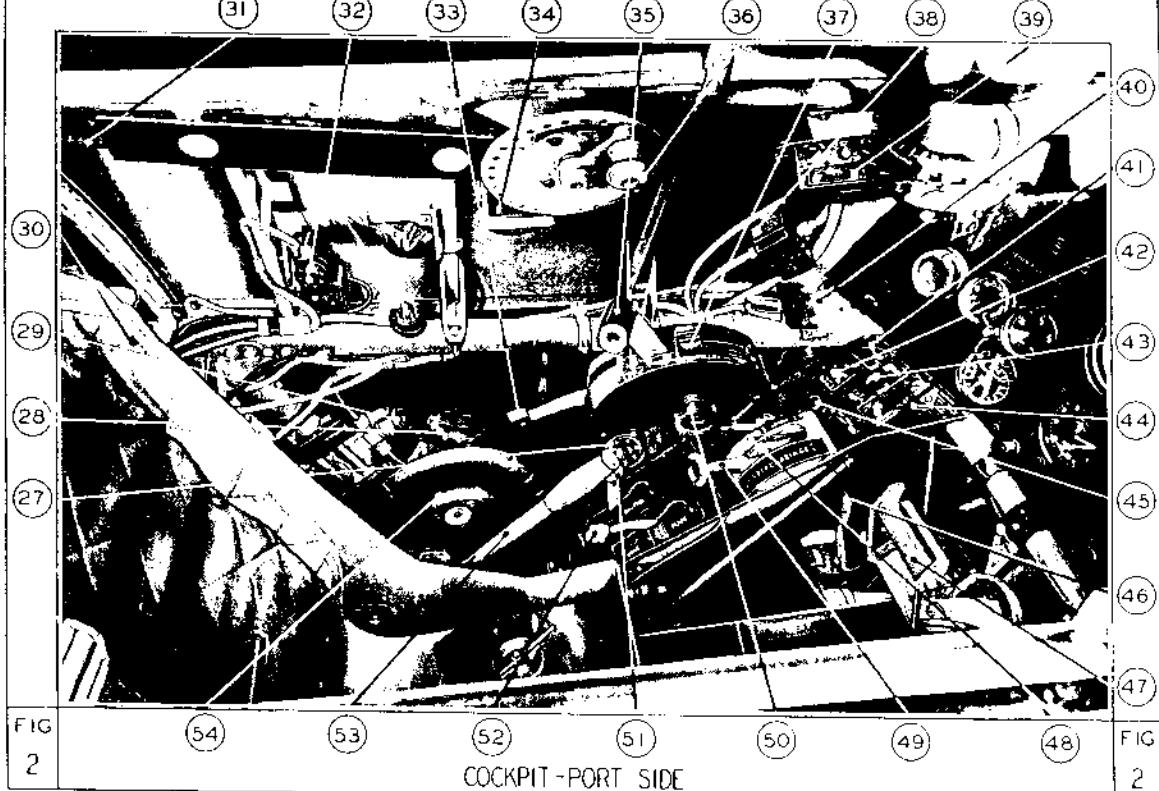


KEY TO *Fig. 1*

INSTRUMENT PANEL

1. Undercarriage indicator switch
2. Ignition switches
3. Watch holder
4. Undercarriage warning light
5. Oxygen regulator
6. Undercarriage indicator
7. Starter and booster-coil switches
8. Contactor switch
9. Remote contactor
10. Flap position indicator
11. Dimmer switch (port cockpit light)
12. Dimmer switch (gun sight)
13. Spare bulbs
14. Dimmer switch (starboard cockpit light)
15. Dimmer switch (compass light)
16. Engine speed indicator
17. Boost gauge
18. Fuel tank contents gauge
19. Main tank fuel contents gauge.
20. Compass card holder
21. Oil temperature gauge
22. Oil pressure gauge
23. Coolant temperature gauge
24. Fuel pressure warning light
25. Power failure warning light
26. Pneumatic pressure gauge.



KEY TO *Figs. 2 and 3*

- | | |
|--|--|
| 27. Hydraulic system pressure gauge (test) | 57. Dimmer switch (electrical panel light) |
| 28. Rudder trimmer | 58. Cylinder priming pump |
| 29. Oxygen control valve | 59. Hood jettison handle |
| 30. Pilot's seat | 60. Fuel cock lever—Interspar tanks |
| 31. Sliding hood mechanism | 61. Fuel cock lever—Main tank |
| 32. Provision for I.F.F. | 62. Fuel cock lever—Nose tank |
| 33. Supercharger lever | 63. Pressurising cock |
| 34. Demolition switches | 64. Cockpit heat control |
| 35. Throttle lever | 65. Signalling switchbox |
| 36. Hood operating handle | 66. Windscreen de-icer pump |
| 37. Propeller control lever | 67. Engine data card holder |
| 38. Ignition test switches | 68. Navigation lights switch |
| 39. T.R.1143 control unit | 69. Resin lamps switch |
| 40. Undercarriage assister control | 70. Camera master switch |
| 41. Landing lamp switch | 71. Electrical panel light |
| 42. Beam approach switch | 72. Heated clothing socket |
| 43. Cut-out lever | 73. Map case |
| 44. Cut-out safety catch | 74. Mic.-tel. socket |
| 45. Dimmer switch (trimmer light) | 75. Dummy socket (footage indicator plug) |
| 46. Undercarriage up-lock release pedal | 76. Oil dilution button |
| 47. Rudder pedal | 77. Cartridge starter re-loading handle |
| 48. Undercarriage lever safety catch | 78. Voltmeter |
| 49. Undercarriage lever | 79. Heated-clothing switch |
| 50. Throttle friction adjuster | 80. Seat adjusting lever |
| 51. Radiator shutter lever | 81. Pilot's harness |
| 52. Flap lever | 82. Footage indicator wedge plate |
| 53. Hydraulic handpump | 83. T.R.1143 master switch |
| 54. Elevator trimmer | 84. Pressure-head heater switch |
| 55. Compass | 85. Rudder bar handwheel |
| 56. Carburettor priming pump | |